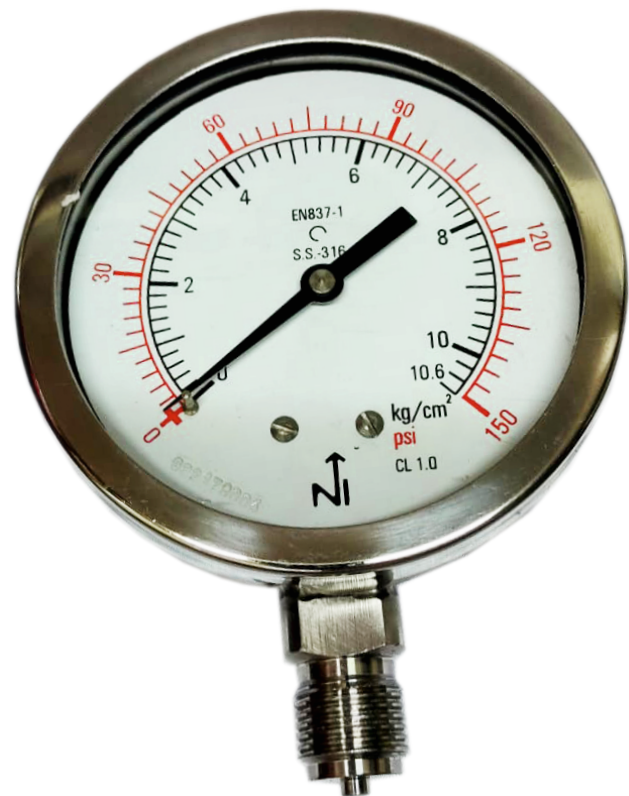


APPLICATIONS

- Liquid & gaseous mediums
- Corrosive environments
- Oil & Gas applications
- Chemical & Petrochemical
- Food & Beverages
- Nuclear power plants

FEATURES

- All stainless steel welded construction
- Follows IS 3624 / EN 837-1 / ASME B40.100
- Accuracy as per $\pm 1.0\%$ / CL 1.0 / Grade 1A
- Dry / Fillable / Liquid filled



DESCRIPTION

GENERAL

Design : EN 837-1
 Accuracy : $\pm 1.0\%$ of full scale
 Ambient temperature : -40...+65°C [without dampening liquid]
 -40...+65°C [with dampening liquid filled silicon oil]
 Service temperature : 300°C max.
 Pressure limits : Steady pressure up to FS value
 Fluctuating pressure up to 90% of FS value
 Short time 130% of FS value for range up to 100 bar
 Short time 115% of FS value for range above 100 bar
 Weld joints : TIG argon arc welding
 Protection class as per EN 837-1 : S1

MATERIAL OF CONSTRUCTION

Sensing element : Bourdon Tube
 [<100 bar : C - type , >100 bar : Helical]
 Case & Ring material : AISI 304 SS [Bayonet type]
 Bourdon tube & Shank : AISI 316L SS / Monel
 [Shank welded directly to case for rigidity in vibration field]
 Movement mechanism : AISI 304 SS
 Dial : Aluminum, black graduation on white background
 Pointer : Micro-zero adjustable, aluminum, black powder coated
 Gaskets, Blow off disc & filling plug : Neoprene / NBR
 Window : Sheet glass / Shatterproof safety glass

STANDARD VERSION

Dial size : 100 mm / 150 mm / 250 mm
Range : -1 - 0 - 1,600 bar
Mounting pattern : Direct Bottom
Process connection : 1/2" NPT (M) / 1/2" BSP (M)
Ingress protection : IP 65
Execution : Dry / Dry but fillable

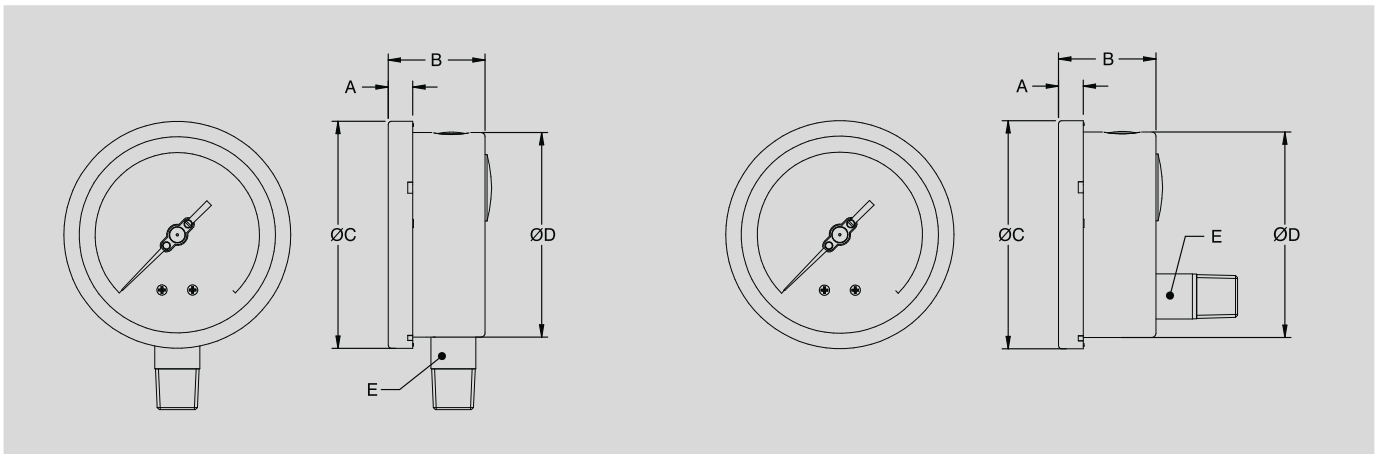
Temperature effect

When temperature of the measuring system deviates from reference temperature (+20°C):
 max ±0.4% / 10K of full scale value.

FILLED VERSION

Glycerin
Window : Shatterproof safety glass
Dampening liquid : Glycerin 99.7% / 80% / 60%
 [Service temperature -20°C up to 65°C]
Silicon Oil
Window : Shatterproof safety glass
Gasket, Blow off disc & filling plug : NBR / Viton
Dampening liquid : Silicon oil DC 200
 [Service temperature -40°C up to 150°C]

DIMENSIONAL DRAWING



NS	A	B	ØC	ØD	E
100	12	48	111	100	±22
150	15	48	161	149	±22
250	18.5	50	263	250	±22

NOTES
 1. Drawing not to scale. All dimensions are in mm.
 2. For other mounting details, Panel cut-out dimensions, kindly contact factory.

*Only our most popular models and options are listed. For additional available models, please contact Factory.

ORDERING CODES

1. MODEL

NI Stainless steel precision pressure gauge

2. DIAL SIZE

D4 4*/100mm
D6 6*/150mm
D10 10*/250mm

3. MOUNTING

M1 Direct bottom
M2 Direct bottom with back flange
M6 Direct lower back
M7 Direct lower back with front flange
M8 Direct lower back with panel mounting clamp

4. CONNECTION

P4 ¼" NPT (M)
P3 ¼" BSP (M)
P8 ½" NPT (M)
P5 3/8" BSP (M)
P20 M20 X 1.5 mm (M)
P7 ½" BSP (M)

NI

D4

M1

P4

5. CASE FILLING

F1 Dry
F2 Dry But fillable
F3 Glycerin filled
F4 Silicon oil filled

6. WETTED PARTS

S03 AISI 316L SS
S05 MONEL
S01 AISI 304 SS

7. INGRESS PROTECTION

I1 IP 65
I3 IP 68

8. RANGE

0-10 BAR
 Please mention range required with the measurement unit

9. OPTIONAL EXTRAS

E33 AISI 316 SS Case & Ring
E04 AISI 316 SS Movement
E10 Over range protection 1.5xFS
E16 5 - Point calibration certificate
E20 Cleaned for Oxygen service
E28 AISI 316 SS Tag plate
E31 Custom designed dial
E43 Internal overload stop
E05 Dampened movement
E12 Epoxy coating (Case & Ring)
E17 Material test certificate 3.1
E26 Accuracy ±0.5%
E46 External zero adjustment
E44 Internal vacuum stop
E06 Maximum reading pointer
E13 Receiver gauge
E22 Tested to NACE standards
E27 AISI 304 SS tag plate
E32 Dial tag marking

F2

S03

I1

0-10
BAR

E33

ORDERING EXAMPLE : NIPG-D4-M1-P4-F2-S03-I1-0-10BAR-E33

*Only our most popular models and options are listed. For additional available models, please contact Factory.